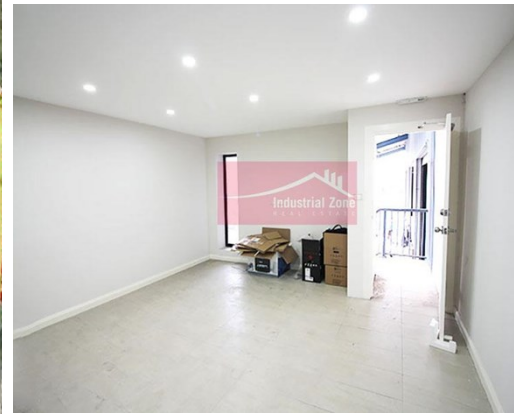


For Lease

19 Ashford Avenue MILPERRA



LARGE CONCRETE HARDSATND AREA WITH OFFICE

Description

- * Generally flat sealed secure concreted yard
- * Renovated office area of approximately 78m²
- * Ideal for storage or parking of machinery
- * Situated close to main arterial roads (Milperra Rd & M5 & Henry Lawson Drive).
- * Available now

All dimensions and figures are approximate.
Unless stated, all prices quoted are exclusive of GST.

Land Area sqm:	3,000
Asking Rent:	\$220,000 Pa Gross + GST
Zoning:	IN1 General Industrial
Council:	Canterbury-Bankstown



Osman Omar
0414 311 377
osman@industrialzone.com.au