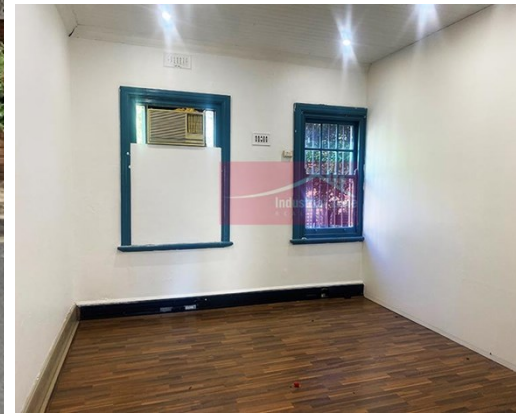


For Lease

Area A 24 Burleigh Street BURWOOD



PRIME OFFICE LOCATION

Description

- * Situated on a prime corner position
- * Close proximity to public transport and Westfield's shopping centre
- * Suitable for a variety of uses
- * Parking available on-site with an ample council car park also nearby
- * Available Now

All dimensions and figures are approximate.
Unless stated, all prices quoted are exclusive of GST.

Office Area sqm:	104
Asking Rent:	\$36,000 Pa Gross + GST
Zoning:	B4 Mixed Use
Council:	Burwood



Jude Adu-Boateng
0451 011 049
jude@industrialzone.com.au