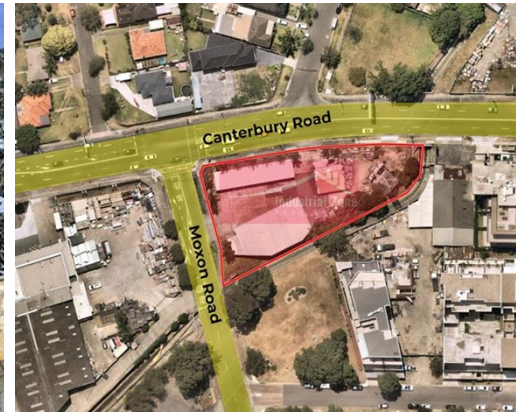


# For Lease

1582-1584 Canterbury Road PUNCHBOWL



## CORNER THE MARKET

### Description

- \* Great main road exposure with 95 metres of frontage located on a corner position.
- \* Dual driveway access via Canterbury Road & Moxon Road
- \* Suitable for Bulky Goods Retail
- \* Fully secured and fenced yard area.
- \* Minutes from to M5 (motorway) & easy access to Stacey Street
- \* Available with 1 months notice

Available areas:

Building area: 450m<sup>2</sup> Approx.

Site area: 3,065m<sup>2</sup>

All dimensions and figures are approximate.

Unless stated, all prices quoted are exclusive of GST.

<b>Building Area sqm:</b>	Retail	450
	Total Area:	450

**Asking Rent:** \$160,000 Pa Gross + GST

**Zoning:** B5 Business Development

**Council:** Canterbury-Bankstown



**Osman Omar**

0414 311 377

osman@industrialzone.com.au