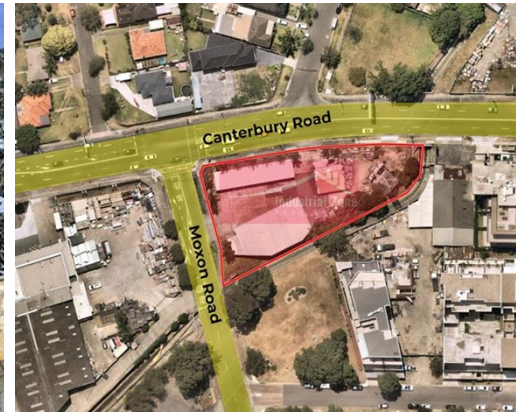


For Lease

1582-1584 Canterbury Road PUNCHBOWL



CORNER THE MARKET

Description

- * Great main road exposure with 95 metres of frontage located on a corner position.
- * Dual driveway access via Canterbury Road & Moxon Road
- * Suitable for Bulky Goods Retail
- * Fully secured and fenced yard area.
- * Minutes from to M5 (motorway) & easy access to Stacey Street
- * Available with 1 months notice

Available areas:

Building area: 450m² Approx.

Site area: 3,065m²

All dimensions and figures are approximate.

Unless stated, all prices quoted are exclusive of GST.

Building Area sqm:	Retail	450
	Total Area:	450

Asking Rent: \$160,000 Pa Gross + GST

Zoning: B5 Business Development

Council: Canterbury-Bankstown



Osman Omar

0414 311 377

osman@industrialzone.com.au