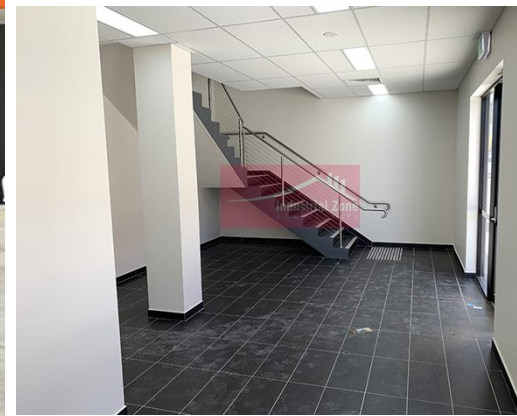


For Lease

Unit 19 60 Marigold Street REVESBY



MODERN NEW STRATA UNIT

Description

- * Ideally located just off Milperra Road and close to the M5 Motorway
- * Modern Warehouse / Office Complex
- * High internal warehouse clearance of 9-10 metres (approx.)
- * Quality mezzanine office
- * Motorised roller door with container access
- * 4 allocated carspaces for customers & staff
- * To be offered as a lease assignment until April 2025 or new lease to be negotiated with landlord

Available areas:

Office area: 69m²

Warehouse area: 379m²

Total Building: 448m² Approx.

All dimensions and figures are approximate.

Unless stated, all prices quoted are exclusive of GST.

Building Area sqm:	Office	69
	Warehouse	379
	Total Area:	448

Asking Rent: \$88,000 Pa Gross + GST

Zoning: IN2 Light Industrial

Council: Canterbury-Bankstown



Jude Adu-Boateng

0451 011 049

jude@industrialzone.com.au



Mark Sfeir

0403 125 010

mark@industrialzone.com.au