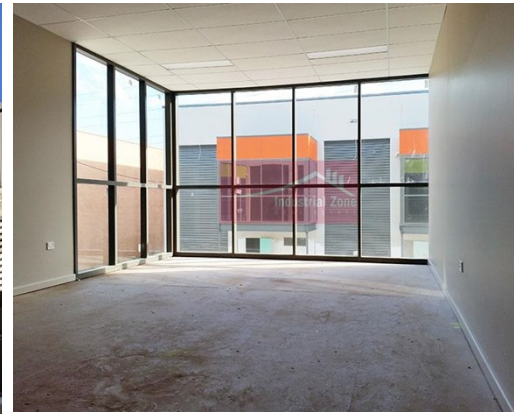


For Lease

Unit 21 11 Davies Road PADSTOW



MODERN STRATA INDUSTRIAL UNIT

Description

- * Opportunity to showcase your business in this modern Industrial unit
- * Conveniently located with easy access to M5 motorway
- * Light filled, air conditioned mezzanine office space
- * Extremely clean & well presented with painted floors
- * 2 x dedicated car spaces at door
- * Available Now

Available areas:

Office area: 40m²

Warehouse area: 134m²

Total Building: 174m² Approx.

All dimensions and figures are approximate.

Unless stated, all prices quoted are exclusive of GST.

Building Area sqm:	Office	40
	Warehouse	134
	Total Area:	174

Asking Rent: \$42,000 Pa Gross + GST

Zoning: IN2 Light Industrial

Council: Canterbury-Bankstown



Osman Omar

0414 311 377

osman@industrialzone.com.au