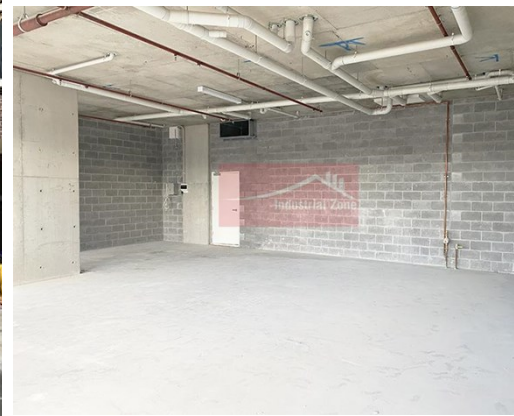
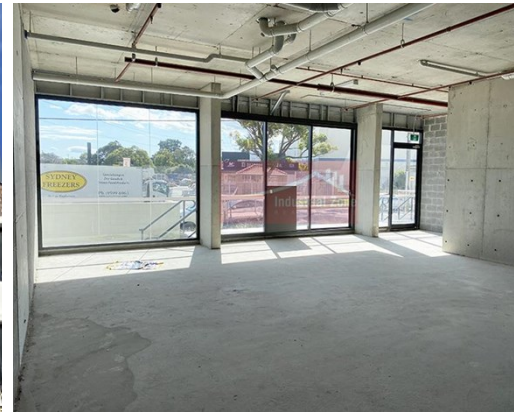


# For Lease

Shop 2 1562 Canterbury Road PUNCHBOWL



## EXCELLENT BUSINESS EXPOSURE !

### Description

- \* Brand new commercial space with excellent exposure
- \* Glass façade with wide frontage to Canterbury Road
- \* 3 secure underground car spaces
- \* Flexible lease terms available
- \* Available now!

All dimensions and figures are approximate.  
Unless stated, all prices quoted are exclusive of GST.

**Building Area sqm:** Retail 100  
Total Area: 100

**Asking Rent:** Contact Agent

**Zoning:** B5 Business Development

**Council:** Canterbury-Bankstown



**Mark Sfeir**  
0403 125 010  
mark@industrialzone.com.au