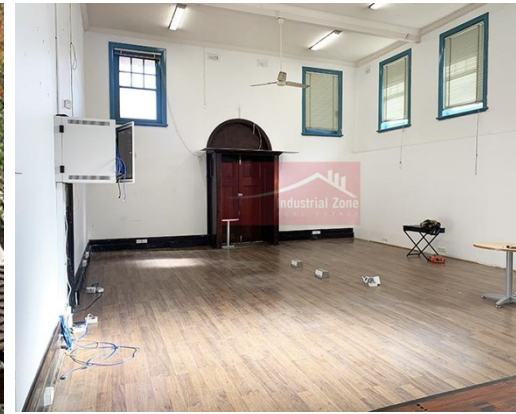


# For Lease

Area A 24 Burleigh Street BURWOOD



## PRIME OFFICE LOCATION

### Description

- \* Situated on a prime corner position
- \* Suits a variety of users
- \* Parking available on site
- \* Ample council parking available
- \* Close proximity to public transport and Westfield's shopping centre

All dimensions and figures are approximate.  
Unless stated, all prices quoted are exclusive of GST.

**Office Area sqm:** 104  
**Asking Rent:** \$40,000 Pa Gross + GST  
**Zoning:** B4 Mixed Use  
**Council:** Burwood



**Jude Adu-Boateng**  
0451 011 049  
jude@industrialzone.com.au