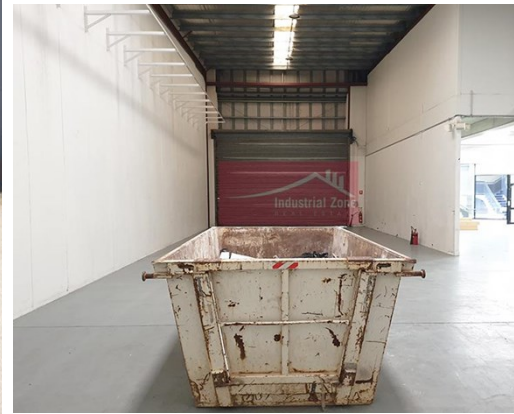


For Lease

Unit T 10-16 South Street RYDALMERE



ROLL UP IN RYDALMERE - 911m² OF WAREHOUSE & OFFICE

Description

- * Located in the heart of Rydalmere industrial precinct
- * Modern industrial facility with ample 3 phase power available
- * Clearspan warehouse with up to 8.6m internal clearance
- * First floor office is carpeted & air conditioned
- * Excellent vehicular access with ample onsite parking & café onsite
- * Sub-lease available until 30/11/2022 or new lease to be negotiated with the landlord
- * Contact Burak today

Available areas:

Warehouse: 665m²

Office: 246m²

Total: 911m² Approx.

All dimensions and figures are approximate.

Unless stated, all prices quoted are exclusive of GST.



Warehouse Area

655m²



Office Area

246m²



Internal Height

8.6m



High Power

3 Phase Power



Parking

10 Car spaces

| | | |
|---------------------------|-------------|-----|
| Building Area sqm: | Office | 246 |
| | Warehouse | 665 |
| | Total Area: | 911 |

Asking Rent: \$132,095 Pa Net + GST

Outgoings: \$31,966 Pa approx.

Zoning: IN1 General Industrial

Council: City of Parramatta



Burak Turkmener

0431 561 996

burak@industrialzone.com.au

