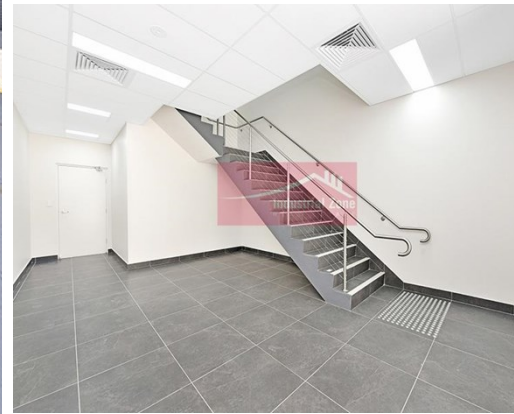


For Lease

Unit 12 60 Marigold Street REVESBY



BRAND NEW STRATA UNIT - AVAILABLE OCTOBER

Description

- * Modern Warehouse / Office Complex
- * High internal warehouse clearance of 9 -10 metres
- * Quality Mezzanine offices
- * Motorised roller doors
- * Container access
- * On site parking
- * Male & female amenities
- * Ideally located just off Milperra Road and close to the M5 Motorway

All dimensions and figures are approximate.
Unless stated, all prices quoted are exclusive of GST.



Warehouse Area
297m²



Office Area
111m²



Parking
4 spaces onsite



Motorway Access
Close to M5



Internal Height
9 to 10 metres



Kitchen



Container Access



Air con

Building Area sqm:	Warehouse	297
	Office	111
	Total Area:	408

Asking Rent: \$82,000 Pa Gross + GST

Zoning: IN2 Light Industrial

Council: Canterbury-Bankstown



Osman Omar
0414 311 377
osman@industrialzone.com.au