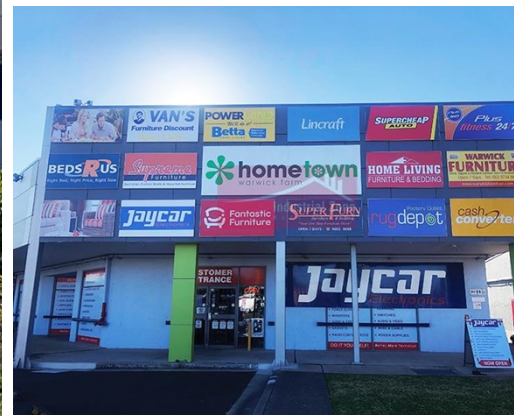


For Lease

Shop 26-27 1 Sappho Road WARWICK FARM



PRIME LOCATION IN BUSY RETAIL CENTRE

Description

- * Prominent position in a busy retail centre
- * Anchor tenants include Super Cheap Auto, Fantastic Furniture, Cash Converters, Lincraft, Beds R Us, Powerland Electronics & Dollar World.
- * Plenty of on-site parking available
- * Additional signage opportunity available
- * Main road location with upwards of 50,000 vehicles passing daily (approx.)
- * Inspection is a must!

All dimensions and figures are approximate.
Unless stated, all prices quoted are exclusive of GST.

Building Area sqm: Retail 305
Total Area: 305

Asking Rent: \$99,000 Pa Gross + GST

Zoning: IN1 General Industrial

Council: Liverpool City



Mark Sfeir
0403 125 010
mark@industrialzone.com.au



Zac Karolia
0449 872 148
zac@industrialzone.com.au