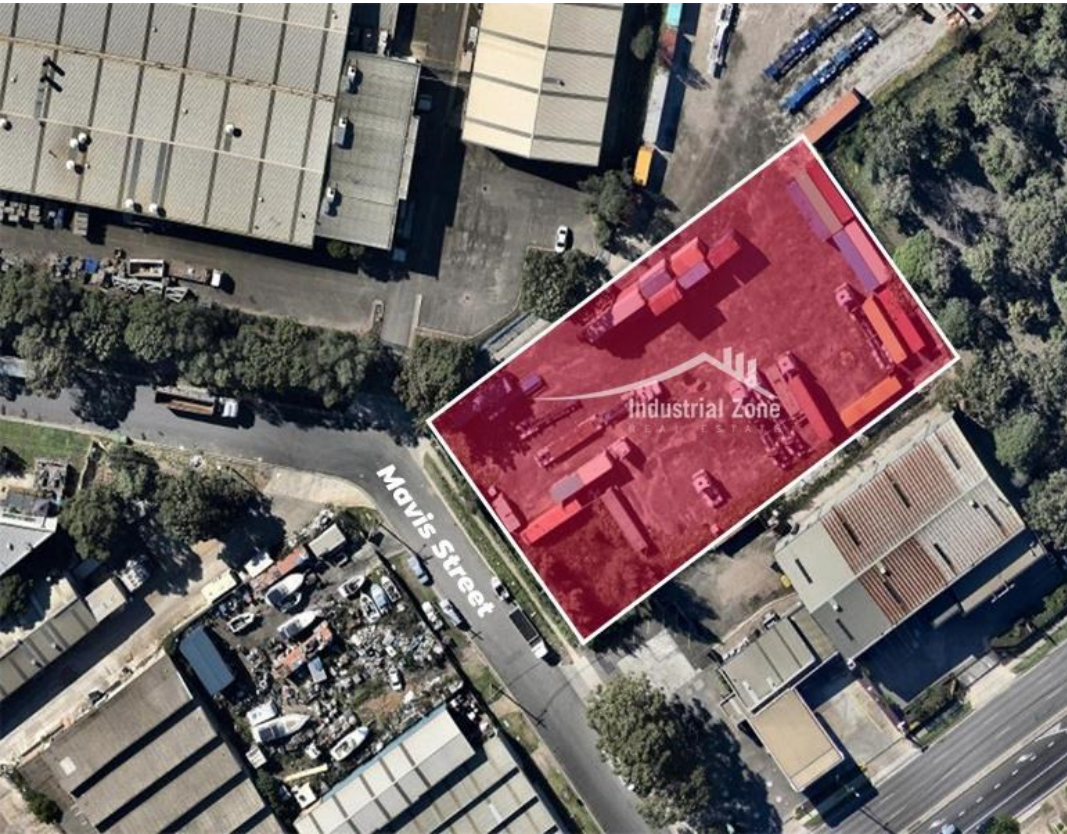


# For Lease

Lot 2 2 Mavis Street REVESBY



## IDEAL PARCEL OF INDUSTRIAL LAND

### Description

- \* General level & secured yard area
- \* Ideal for storage or parking of machinery
- \* Water and electricity available on site.
- \* Situated close to main arterial roads.
- \* Easy truck and trailer access
- \* Available 1st July 2019

All dimensions and figures are approximate.  
Unless stated, all prices quoted are exclusive of GST.



**Site Area**  
3,802m<sup>2</sup>



**Container Access**

**Land Area sqm:** 3,802  
**Asking Rent:** \$155,000 Pa Gross + GST  
**Zoning:** IN1 General Industrial  
**Council:** Canterbury-Bankstown



**Zac Karolia**  
0449 872 148  
zac@industrialzone.com.au



**Mark Sfeir**  
0403 125 010  
mark@industrialzone.com.au