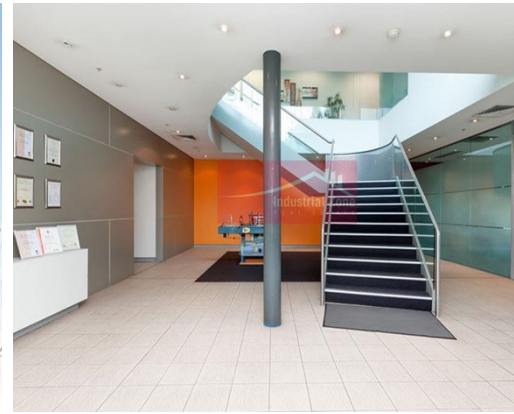


For Lease

6 The Crescent KINGSGROVE



CORPORATE WAREHOUSE/OFFICE ON THE M5 CORRIDOR

Description

- * Located adjacent to the M5 corridor
- * Recently refurbished with service lift to basement & all levels
- * Modern warehouse with high clearance from 5.5m to 7.7m
- * Modern partitioned offices with ducted a/c
- * Abundance of basement parking - up to 37 cars
- * Excellent vehicular & container access
- * Vacant & available now

All dimensions and figures are approximate.
Unless stated, all prices quoted are exclusive of GST.



Warehouse Area
2,298m²



Office Area
779m²



Container Access



Internal Height
From 5.5m to 7.7m



Motorway Access
Adjacent to the M5 corridor



Air con
Offices



Parking
37



Availability
Available now

Building Area sqm:	Office	779
	Warehouse	2,298
	Total Area:	3,077

Asking Rent: \$643,290 Pa Gross + GST

Zoning: IN2 Light Industrial

Council: Georges River



Burak Turkmener
0431 561 996
burak@industrialzone.com.au



Peter Mandile
0415 673 764
peter@industrialzone.com.au