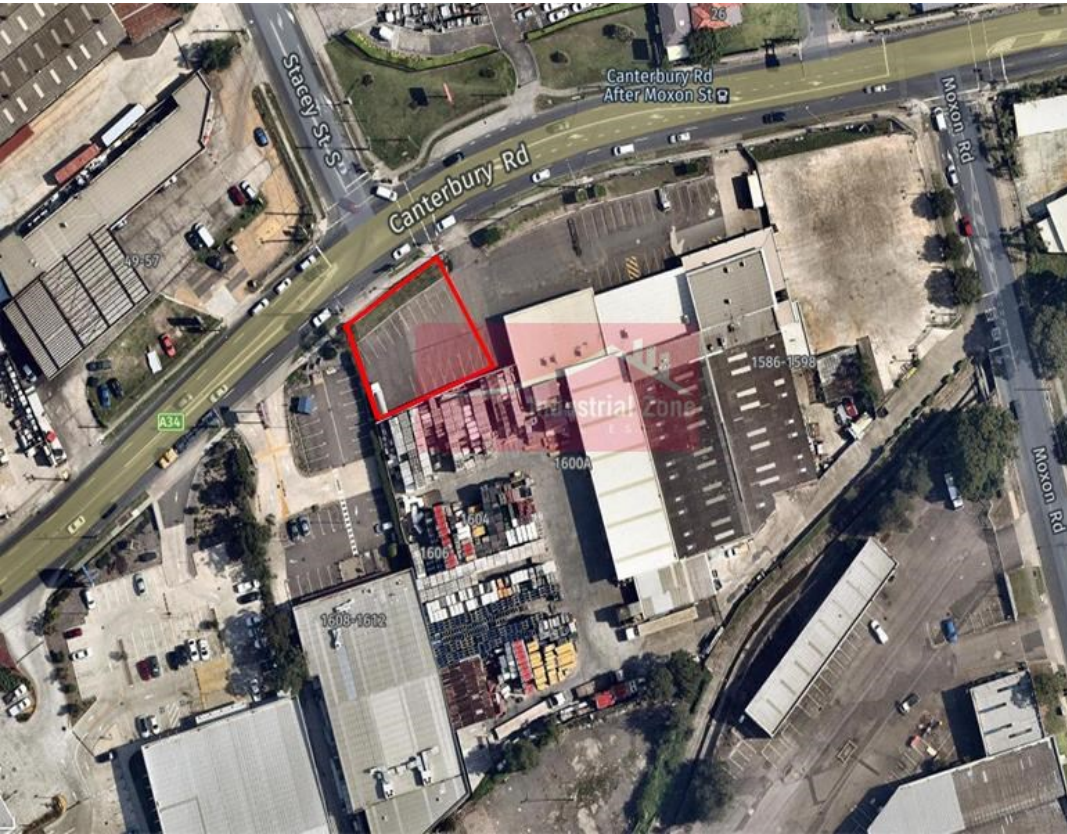


For Lease

Area G 1586-1600 Canterbury Road PUNCHBOWL



HARD STAND AREA WITH GREAT EXPOSURE

Description

- * High exposure site located directly on Stacey St & Canterbury Rd intersection
- * Easy access hardstand with power and water available
- * Secure site perimeter fencing
- * Located close to M5 on/off ramps
- * Available now

All dimensions and figures are approximate.
Unless stated, all prices quoted are exclusive of GST.



Site Area
750m²



Location
Located on Stacey St & Canterbury Rd



Motorway Access
Close to M5 on/off ramps



Secure Yard
Fenced site



Availability
Available now

Land Area sqm: 750
Asking Rent: \$40,000 Pa Gross + GST
Zoning: B5 Business Development
Council: Canterbury-Bankstown



Peter Mandile
0415 673 764
peter@industrialzone.com.au



Zac Karolia
0449 872 148
zac@industrialzone.com.au