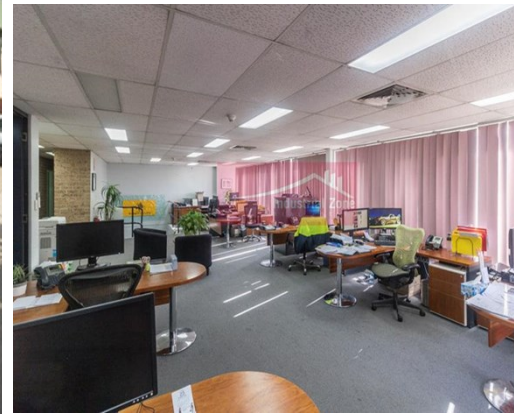


For Lease

Unit C 120 Hassall Street WETHERILL PARK



HIGH CLEARANCE WAREHOUSE WITH MEZZANINE

Description

- * Single roller shutter door 5.1m wide 4.8m high
- * Internal warehouse clearance of 6m– 7.5m
- * Amenities on ground & first floor with showers, kitchenette & lunchroom
- * Additional bonus mezzanine, not included in the quoted size
- * Wide driveways for easy truck access
- * Available Now - Call Burak to inspect.

All dimensions and figures are approximate.
Unless stated, all prices quoted are exclusive of GST.



Warehouse
739m²



Office
170m²



Roller Door
5.1m wide - 4.8m high



Ceiling Height
6m - 7.5m



Kitchen
Kitchenette
lunchroom

&



Showers
Showers available

Building Area sqm:	Office	170
	Warehouse	739
	Total Area:	909

Asking Rent: \$99,968 Pa Net + GST

Outgoings: \$27,000 Pa

Zoning: IN1 General Industrial

Council: Fairfield City



Burak Turkmener
0431 561 996
burak@industrialzone.com.au