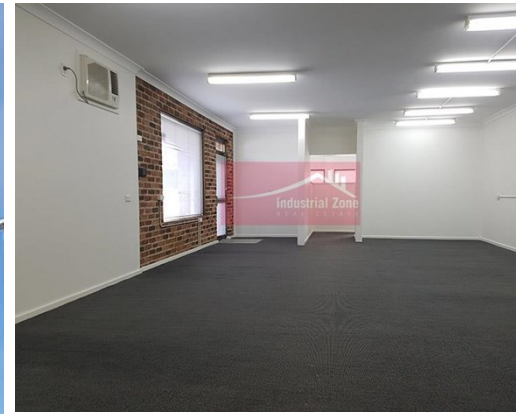


# For Lease

11A Macarthur Avenue REVESBY



## PRIME POSITION -OPPOSITE REVESBY WORKERS

### Description

- \* Enjoying high profile corner location opposite Revesby Workers
- \* Flexible floorplan with 2 x street access - suit many uses
- \* Located only 160m from Revesby train station
- \* Freshly painted throughout - own kitchenette & private amenities
- \* Ideally suit offices of Medical use however open to other users
- \* Enquire & inspect today with Exclusive Agents

All dimensions and figures are approximate.  
Unless stated, all prices quoted are exclusive of GST.



### Availability

Now!



### Train

160 m from Revesby Station



### Office

114m<sup>2</sup>

<b>Office Area sqm:</b>	114
<b>Asking Rent:</b>	\$45,600 Pa Net + GST
<b>Outgoings:</b>	\$2,680 Pa
<b>Zoning:</b>	B2 Local Centre
<b>Council:</b>	Canterbury-Bankstown



**Peter Mandile**  
0415 673 764  
peter@industrialzone.com.au