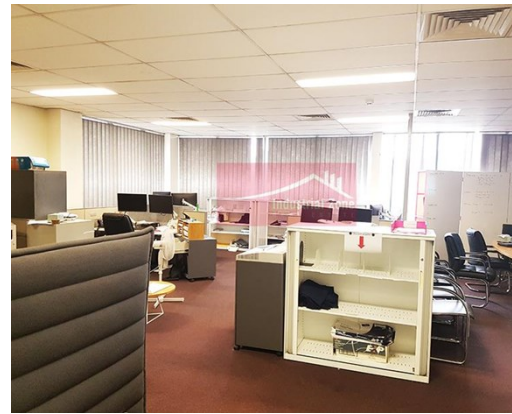


# For Lease

Unit 2, 7 Roberts Road GREENACRE



## EXPOSURE - WAREHOUSE & SHOWROOM

### Description

- \* Automotive friendly
- \* High Clearance - clearspan warehouse
- \* Fantastic exposure to Roberts Road
- \* Easy access to M5 & M4 Motorways
- \* Air conditioned office & showroom
- \* Suite a variety of uses

All dimensions and figures are approximate.  
Unless stated, all prices quoted are exclusive of GST.



#### Motorway Access

M5 & M4



#### Warehouse

259m<sup>2</sup>



#### Office

94m<sup>2</sup>



#### Showroom

70m<sup>2</sup>



#### Air Conditioning

|                           |                    |            |
|---------------------------|--------------------|------------|
| <b>Building Area sqm:</b> | Office             | 94         |
|                           | Showroom           | 70         |
|                           | Warehouse          | 259        |
|                           | <b>Total Area:</b> | <b>423</b> |

**Asking Rent:** \$63,450 Pa Net + GST

**Outgoings:** \$12,322

**Zoning:** IN1 General Industrial

**Council:** Strathfield



**Peter Mandile**  
0415 673 764  
peter@industrialzone.com.au



**Zack Karolia**  
0449 872 148  
zack@industrialzone.com.au