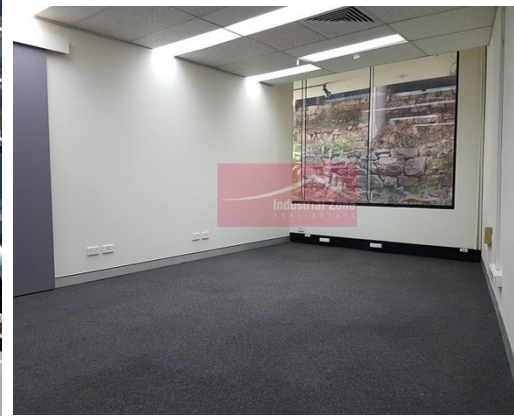
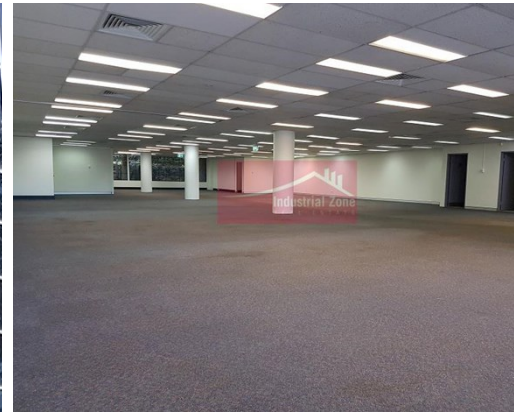


# For Lease

Ground Level 81 Railway Street ROCKDALE



## COMMERCIAL OFFICE - ADJACENT TO ROCKDALE STATION

### Description

- \* Less than 100m to Rockdale station & bus network
- \* Outstanding ground floor commercial office space
- \* Open floor plan - Fully air-conditioned
- \* Own amenities include staff room, male, female & disabled amenities
- \* Secure basement parking with 3 spaces
- \* Vacant & ready for immediate occupation

All dimensions and figures are approximate.  
Unless stated, all prices quoted are exclusive of GST.



**Office Area**  
515m<sup>2</sup>



**Availability**  
Available now!



**Train**  
Less than 100m to  
Rockdale station



**Parking**  
3 secure spaces



**Air con**  
Ducted conditioning      air

**Office Area sqm:** 515  
**Asking Rent:** \$139,000 Pa Net + GST  
**Zoning:** B2 Local Centre  
**Council:**



**Osman Omar**  
0414 311 377  
osman@industrialzone.com.au