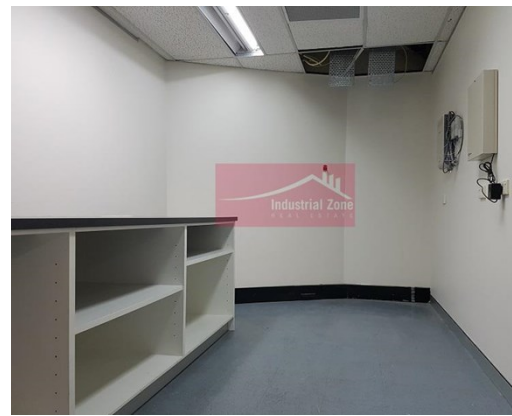
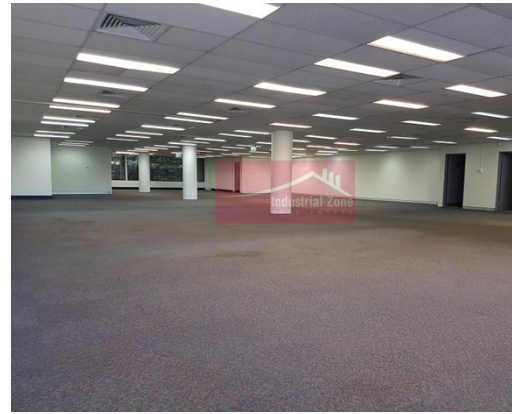


For Lease

Ground Level 81 Railway Street ROCKDALE



COMMERCIAL OFFICE - ADJACENT TO ROCKDALE STATION

Description

- * Outstanding ground floor commercial office space
- * Open floor plan - Fully air-conditioned
- * Own amenities include staff room, male, female & disabled amenities
- * Less than 100m to Rockdale station & bus network
- * Currently vacant & ready for immediate occupation
- * Secure basement parking with 3 spaces
- * Outgoing approximately \$40,000 Pa

All dimensions and figures are approximate.
Unless stated, all prices quoted are exclusive of GST.



Office
515m²



Availability
Available now!



Train
Less than 100m to
Rockdale station



Parking
3 secure spaces



Air Conditioning
Ducted air
conditioning

Office Area sqm: 515
Asking Rent: \$139,000 Pa Net + GST
Zoning: B2 Local Centre
Council:



Peter Mandile
0415 673 764
peter@industrialzone.com.au